

# Window Coverings



**HunterDouglasHospitality**



Hunter Douglas Hospitality offers the most extensive range of shades and other window coverings in the industry, from simple aluminum blinds, to roller shades, to energy-saving motorized shading solutions. For decades, we have led the industry with innovative designs and extraordinary performance.

#### Collections and Custom Options

With collections that meet a variety of requirements for aesthetics, cost, and performance—plus unmatched custom-design capabilities—our fabrics help designers execute their vision for draperies, upholstery, beds, and many other applications.

#### Contact Us











For a design consultation, please call us at 800-229-5300.



#### HUNTER DOUGLAS HISTORY

Hunter Douglas is the world leader in window coverings and a major manufacturer of architectural products. Founded in Europe in 1919, we have a well-established reputation as a leader in products that combine performance and aesthetics. With more than 169 companies and a presence in over 100 countries, we offer partners and customers an unmatched scope of experience and resources.

# Product Overview

PRODUCT		DESCRIPTION	APPLICATIONS
Roller Shades FR	 <span data-bbox="662 520 711 562">2</span>	Superior light and glare control with an unmatched range of fabrics	Guest rooms, meeting rooms, exercise areas, and other public spaces
Roman Shades FR	 <span data-bbox="662 678 711 720">6</span>	Beauty of draped fabrics, in soft or flat-fold styling, with durable hardware	Guest rooms and spa environments
Vignette® FR New Roman Shades	 <span data-bbox="662 835 711 877">8</span>	The look of fabric with the easy, sleek operation of a shade	Guest rooms, suites, and spa environments
Woven Wood FR Shades	 <span data-bbox="662 993 711 1035">9</span>	Warm, rich dimension with natural reeds and grasses	Restaurant, retail and spa environment
Silhouette® FR Shades	 <span data-bbox="662 1150 711 1192">10</span>	Fabric vanes that control light, between sheers that filter glare	Guest rooms and suites, public spaces and meeting rooms
Honeycomb FR Shades	 <span data-bbox="662 1287 711 1329">11</span>	Exceptional light control, energy efficiency, and sound absorption	Guest rooms and meeting rooms
Shutters FR	 <span data-bbox="662 1444 711 1486">12</span>	Traditional and resort style, engineered for durable performance	Public spaces, restaurant, retail, and spa environments
Faux Wood Blinds FR	 <span data-bbox="662 1602 711 1644">13</span>	The warm look of hardwood blinds at a cost-effective price	Restaurant, retail and spa environments
Skyline™ FR Panels	 <span data-bbox="662 1759 711 1801">14</span>	Sleek modern light control with an innovative hardware system	Suites with large windows, spa environments, and meeting rooms
Draperies FR	 <span data-bbox="662 1917 711 1959">15</span>	Custom-designed pinch-pleat and ripplefold draperies and sheers	Guest rooms and suites

# Roller Shades FR

Roller shades by Hunter Douglas Hospitality offer a wide variety of FR fabrics, with many choices for sheers, light-filtering/privacy fabrics, and room-darkening/blackout fabrics. We offer full motorization and automated controls, in addition to two high-quality manual operators. Shades meet NFPA 701 flame-retardancy testing.



## OPTIONS

### Manual Shades

Smooth-operating manual shades with a choice of operation by chain or crank. Our standard Model 100 manual hardware has a metal chain and supports widths from 12" to 98" and heights from 12" to 120". Our Model 200 manual hardware features upgraded mechanisms in aluminum and steel, and the choice of chain or crank operation. Supports widths from 12" to 108" and heights from 12" to 180".

### Motorized Shades

Shades operated by range of AC motors ensure power and reliability, with many options for automation and sun-tracking. Virtually unlimited widths and heights.

### Custom Shades

Our custom design capabilities are unmatched. Custom printing of shade designs, solutions for non-standard shapes, and systems for all shade sizes.

# Roller Shades FR (Continued)

## Shading Effects & Ideas

Roller shades offer a reliable way of controlling daylight and views, filtering sun glare, and even blocking heat that enters the window as solar energy. Guest rooms, restaurants, public spaces, and A/V and meeting rooms all have different requirements. When designing a shade, a few key characteristics affect how it will meet your objectives.



## ITEMS TO CONSIDER

What is the most important function of the shade:

- To control light, to filter glare, to block heat, or to create privacy?  
Or is it primarily an aesthetic element in the space?
- Does the shade need to transmit light (if yes, use a lighter fabric)?
- Do you want to preserve the view (if yes, use a darker fabric)?
- How should the shade mount to the window opening?  
Inside the frame, for best integration? Or outside, for best light control?
- Would motorization be desirable? Typical reasons often include convenience, weight, or sun-tracking automation.

# Roller Shades FR (Continued)

## Blackout Shades

Ideal for guest rooms and audiovisual facilities, where total control of light is required, roller shades with blackout fabrics and side channels offer an easy-to-use, reliable solution that can eliminate light gaps.



## Privacy/Room Darkening Shades

In areas such as meeting rooms that need a strong filter for glare-control and privacy, but where total light-blocking is not required, shades with room-darkening fabrics are a good option.



## Light-Filtering Shades

In public spaces or other areas that need some shading, but still offer views, light-filtering fabrics will preserve exterior views, allow daylighting, and ensure visual comfort. Lighter colored fabric, with high visible light transmittance can brighten spaces such as guest rooms when used as the sheer element.



# Configurations

## Standard Shades

Specify shades without fascia for installation in a pocket or behind a valance.

## Shades with Fascia

Specify shades with metal fascia to shield shade roll and hardware. Sizes: 3" x 2-1/4" or 4" x 2-3/4". Colors: vanilla, white, bronze, anodized, black.

## Pocket Installation

To conceal the headrail, install shades in a wide range of ceiling pockets using our versatile top/side/end bracket system.

## Dual Shade

Our dual system enables layering of blackout and light-filtering shades at any window. Offset or side-by-side configurations.



## OPTIONS

Motorization	To boost convenience and durability, automate shade operation with our compact, high-torque, quiet motors. Available with controls ranging from simple switches to full sun tracking.
Mounting Options	Bracketing system supports side, top, and end mounting and offers flexible placement of clutches in side by side installs.
Hem Bars	Hem bars may be hidden or exposed. Variety of square, rounded, and round/oval shapes.
Bottom-up	Tensioned shades that operate from bottom up to allow natural daylighting without sacrificing privacy or glare control.
Blackout	Eliminate light gaps in guest-room and other applications with our opaque fabrics, side/bottom channels, and fascia.
Banded Shades	Banded shades: When desired, more than one fabric can be mounted to a single roller tube.
Additional Options	Specialty shapes for windows that are not square or rectangular. Reverse roll (fabric mounted to descend from the interior-facing side) to conceal the roll and create a more finished appearance.

# Roman Shades FR

Versatile and durable, our manual and motorized Roman Shades ensure reliability and ease of use. Shades can be made using COM, or our fabric range includes a wide selection of prints and wovens that can also be used. Blackout linings for full light control.



## OPTIONS

### Manual Roman Shades

Pull-cord or continuous-cord-loop lifting systems make it easy to operate even large shades.

Shade design ensures fabric will stack evenly in wide panels. Widths from 12" to 192"; heights from 12" to 192".

### Motorized Roman Shades

Powerful, quiet motors allow full automation. Wide range of controls, including switches, remotes, and more. Virtually any width or height is possible, limited only by the characteristics of the fabric and the ability to transport shades to the location.

# Design Options

## Flat Fold

This style is constructed so the fabric gathers behind the shade as it is raised, maintaining a neat, flat appearance for the face of the fabric. Allows close mounting of the shade to the window.

## Soft Fold

Gently curving fabric folds are created by hobbling the face fabric to the lining. Highlights the beauty of how a fabric drapes, and adds soft elegance to the shade appearance.

## Custom Options

Many other styles of gathers, pleats, and rolls can be designed to fit with your room scheme. Whether it's reverse pockets, double pleating, or virtually any custom look, our skilled workrooms can make your vision a reality. From sheer to blackout, flat to folded, we will ensure that shades of any kind look and work the way they should.

OPTIONS	
Customer-Supplied Fabrics	We can create shades using many different fabrics including COM. Note that some very light or heavy fabrics may not be well suited for this application.
Custom Fabrics	Our custom design team can create or modify fabrics to your specifications. Minimum quantities may apply.
Blackout	Eliminate light gaps in guest rooms and other applications with our opaque fabrics and linings.
Coordinated Trims	Our selection of decorative trims adds style and complements other room elements.

# Vignette® FR Modern Roman Shades

Vignette® FR Modern Roman Shades add sleeker looks and greater ease of use while maintaining the soft fabric appeal of a Roman Shade. Soft fabric folds retract smoothly into our exclusive headrail, eliminating the stacking of traditional Roman Shades that can obstruct views. Available with a complete range of standard and custom fabrics. Widths from 12" to 140"; heights from 12" to 96". Shades meet NFPA 701 flame-retardancy testing.

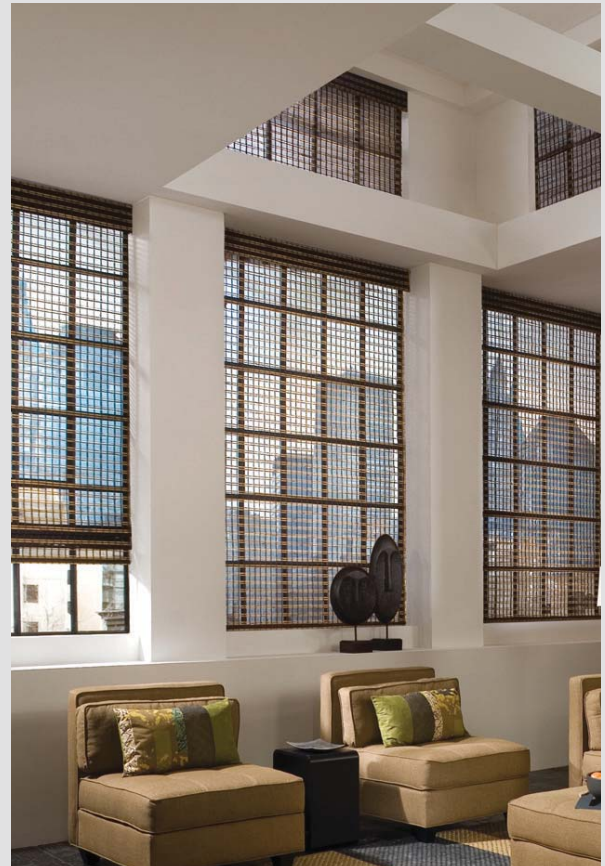
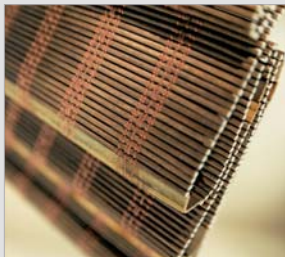


## OPTIONS

Fabric Linings	Two options are available: The translucent lining filters glare, but allows soft light to enter the room. The opaque backing blocks light for sleeping or relaxing. Linings are neutral in color.
Custom Fabrics	Make one-of-a-kind Vignette shades with fabrics you create online or in consultation with our design team.
Color-Coordinated Hardware	Hardware and cords available in a range of complimentary colors to create a fully integrated look.
Motorized Shades	Powerful, quiet motors allow full automation. Full range of controls, including switches, remotes, and more.

# Woven Wood FR Shades

Hunter Douglas Hospitality's Woven Wood FR Shades blend traditional styling, natural materials, and modern operating mechanisms. Offering a range of colors and a selection of woods, reeds, slats and grasses, these woven shades add warmth to any design. Widths from 18" to 144"; heights from 30" to 108". Shades meet NFPA 701 flame-retardancy testing.



## OPTIONS

### Fabric Linings

Light-filtering or room-darkening fabric can be attached to the back of the woven wood material for privacy and enhanced light control. Room-darkening fabrics block 98% of light. Linings available in ivory, cocoa and chocolate, with off-white backing.

### Motorized Shades

Powerful, quiet motors allow full automation. Full range of controls, including switches, remotes, and more.

# Silhouette® FR Shades

Silhouette® FR Shades combine the advantages of draperies and shades into a single, beautiful window covering. Silhouette shadings have soft fabric vanes suspended between two sheers to produce the soft, elegant look of a sheer with the light control of a blind. Widths from 12" to 120"; height minimum 12", maximum varies by width. Shades meet NFPA 701 flame-retardancy testing.



## OPTIONS

Originale™ Light-Filtering Fabric	Translucent vanes diffuse light and filter glare, transforming light into a soft warm glow within the room.
Bon Soir™ Room-Darkening Fabric	Opaque vanes offer precise light control and can block nearly all light to allow sleeping or relaxing.
Custom	Proprietary digital printing capabilities let you add patterns and colors to the shades, creating exclusive shade designs.
Additional Options	Motorization for operation by switches or remotes; mounting 2 shades on 1 headrail.

# Honeycomb FR Shades

Our Honeycomb FR Shades combine soft fabric and an energy-efficient honeycomb design for light control, sound absorption, and energy efficiency. Crisp 3/4" or 3/8" pleats of resilient, dirt-resistant fabrics make these shades durable and beautiful. Widths from 12" to 174"; heights from 6" to 174" (max area 110 ft). Shades meet NFPA 701 flame-retardancy testing.



## OPTIONS

Privacy Fabrics	These semi-opaque fabrics diffuse light as it enters the window. Fabrics are neutral to the building exterior.
Blackout Fabrics	Blackout honeycomb fabrics block light for total privacy when closed. Fabrics are neutral to the building exterior.
Additional Options	Motorization for operation by switches or remotes; specialty shapes including slants and arches.

# Shutters FR

Our FR Shutters beautifully combine traditional style with engineering designed to meet demanding requirements. Durable, UV-resistant polysatin louvers, available in 2-1/2", 3-1/2", and 4-1/2" sizes. Virtually indestructible design is easily cleaned and is guaranteed not to fade, chip, peel, or warp. Widths and heights vary by system (see below). Shutters meet NFPA 701 flame-retardancy testing.



## OPTIONS

<p><b>Standard Panel System</b></p>	<p>Hinged single or bi-fold panels mounted to a frame. Widths from 6" to 144"; heights 16" to 120". (Maximum single panel width is 36").</p>
<p><b>Bi-fold Track System</b></p>	<p>End mounted to track keeps shutters from swinging out into a space as they fold open. Widths 24" to 192"; heights 20" to 120".</p>
<p><b>Bypass Track System</b></p>	<p>Two adjacent tracks allow shutters to glide within the frame. Widths 24" to 192" (8 panels); heights 20" to 120".</p>
<p><b>Additional Options</b></p>	<p>Three panel system, double-hung system, specialty shapes; stainless-steel hinges; variety of tilt-bar positions; French door cut outs.</p>

# Faux Wood Blinds FR

Our Faux Wood Blinds FR are a beautiful choice for hospitality applications. Designed for demanding performance requirements, these blinds offer great design at a cost-effective price. Ideally suited for areas with high humidity and temperatures. Blinds meet NFPA 701 flame-retardancy requirements.

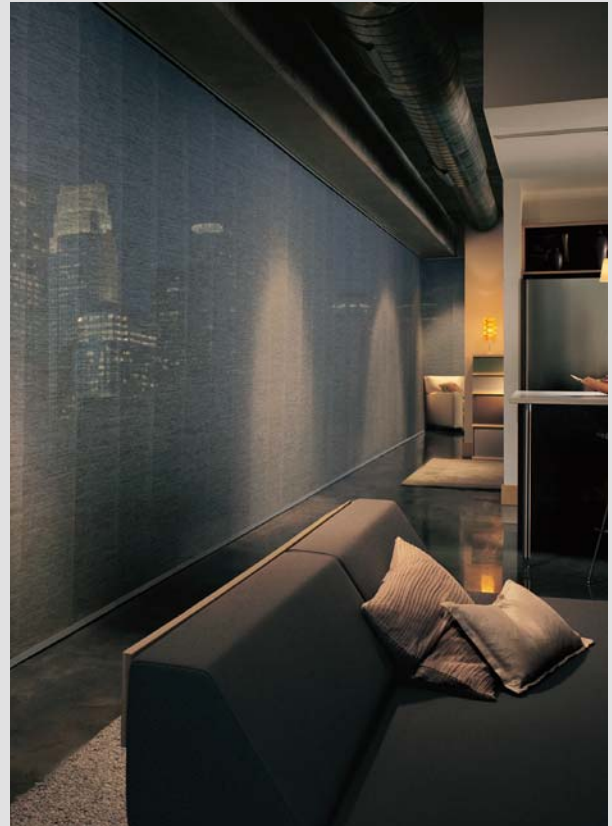


## OPTIONS

Manual Blinds	Features a standard cord tilt and lift for smooth operation and long-life performance. Standard widths from 7" to 72"; heights from 12" to 126". Larger sizes may be available.
Motorized Blinds	Powerful, quiet motors allow full automation. Wide range of controls, including switches, remotes, and more. Our 2" FR faux wood motor will tilt blinds up to 46 square feet.
Additional Options	Routless slats ensure better privacy and daylight control; decorative ladder tapes.

# Skyline™ Panels FR

Gliding fabric panels and an innovative operating mechanisms set our Skyline™ shading system apart. Sliding horizontally on a sleek, low-profile track, series of 11"- or 17"-wide panels cover even the longest spans while maintaining clean, architectural lines. Available with a wide range of screen fabrics. Widths from 28" to 162"; heights from 9" to 168". Shades meet NFPA 701 flame-retardancy requirements.



## OPTIONS

### Room-Darkening Shades

Ideal for guest room, audiovisual, or room-divider applications that require strong light control. Selection of fabrics with 0% openness such as Midnight. The system is not designed for 100% blackout.

### Privacy/Light-Filtering Shades

For rooms that need a strong filter for glare and privacy, fabrics with 5% openness such as Cape Sound and Diamond Head.

### Sheer Shades

To preserve views but offer some light control, fabrics with 10% or 14% openness (including Hampton Breeze and Parker Hill) offer a sheer filter that allows natural lighting and ensures visual comfort.

### Additional Options

Custom printing of fabrics; motorization for switch/remote operation; coupling of tracks for widths up to 384".

# Draperies & Custom Window Treatments

We offer an entire range of custom window treatments, with experience and expertise to meet nearly any requirement. Our drapery fabrication teams consistently deliver the best and most responsive service in the industry, from fitting challenging windows and spaces, to meeting aggressive budgets and deadlines.



OPTIONS	
Draperies	We offer motorized and manual draperies and sheers with pleats, ripplefold designs, and more. We specialize in challenging installations of any size.
Cornices and Valances	Our custom cornices and valances are a classic complement for draperies, shades, or hard window coverings. Constructed on lightweight, durable frames.
Measurement, Installation and Repair	We offer a full range of onsite services from initial and production measurement, to installation and adjustment at the window, to ongoing maintenance and repair.

# Other

## Pleated FR Shades

Our pleated shades offer a wide range of durable FR fabrics, including metallized, semi-sheer, and room-darkening selections for light control and energy efficiency. Widths from 12" to 144"; heights from 12" to 96".



## Aluminum FR Blinds

Our spring-tempered aluminum blind slats offer best-in-class resilience to withstand the toughest treatment and contain 70% to 95% recycled content. Wide range of finishes and dozens of colors. Widths from 10.5" to 144"; maximum height of 144".



## Vertical FR Blinds

Our FR soft vertical blinds feature a patented curved profile, blending a soft look with dimension and durability. Widths from 10" to 190"; heights from 12" to 192".



# Shade Customization

## Digital Printing on Roller Shades

Using digital printing, we can create roller shades with any design you desire, from simple stripes to photographic images. In addition, our custom engineering capabilities allow us to make shades for specialty window shapes and even the largest sizes.

## AirDye® Printing on Vignette® FR and Silhouette® FR Shades

Proprietary digital printing capabilities let you add patterns and colors to the shades, creating exclusive shade designs.



# Shades with Custom COM Fabrics

## Vignette® Shades

Make one-of-a-kind Vignette shades with fabrics you create online or design collaboratively with our in-house designers.

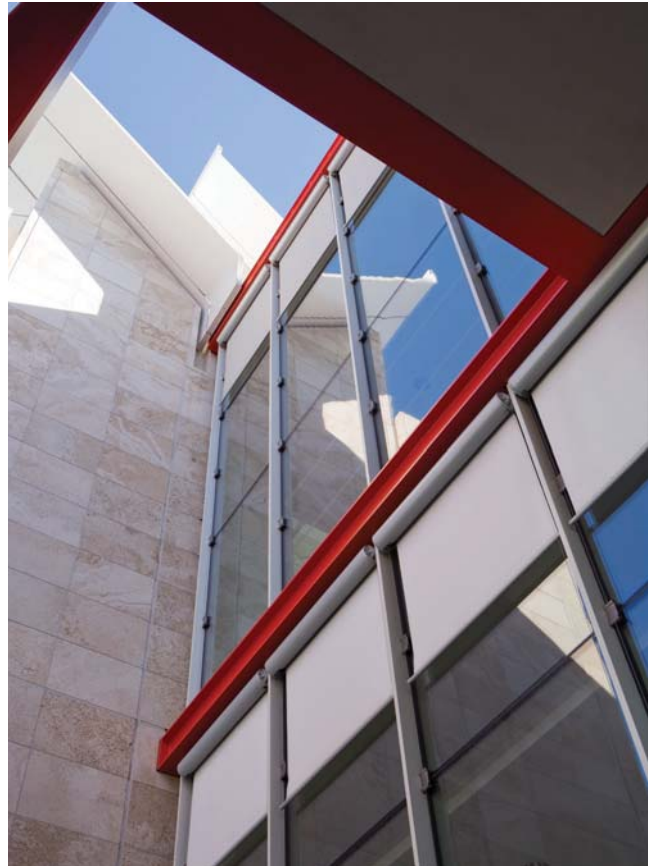
## Roman Shades

Our custom design team can create or modify fabrics to your specifications. Or, we can create shades using fabrics from other sources. Note that some very light or heavy fabrics may not be well suited for this application.

# Motors & Controls

---

Our industry-leading solutions for motorization of draperies and window coverings bring new levels of convenience and control to presentation and A/V spaces, public areas, guest rooms and suites. We have configured and installed systems ranging from single rooms to entire buildings.



## Configurations

---

### Motorized Draperies

We engineered our EOS™ motorized drapery track system specifically for the power, size, and quiet requirements of hospitality and commercial applications. Our system can draw draperies weighing up to 200 pounds up to 384". From hotel rooms, to meeting rooms, to lobbies, our motorized system is designed for sheers, draperies, and liners.

### Control Options

Our motorized drapery track system offers a variety of controls, from wall switches, to wireless remotes, to intelligent sun-tracking systems.

# Installation

---

From project design to final installation, Hunter Douglas provides the most complete range of onsite and remote assistance available, from initial measurement and technical design consultation to final installations, adjustments, and repairs. Our senior managers and field technicians bring expertise to every project that comes from years of experience.

## Specification & Field Measure

- Hunter Douglas Hospitality offers complete technical design assistance in selecting products and specifying solutions, meeting design objectives, and recommending installation configurations.
- Our field-measurement teams verify every window and room dimension as required, ensuring a precise fit to eliminate unnecessary field adjustments.

## Installation

- We install all types of skylight and window coverings, from standard sheers and draperies to motorized roller shades with automated controls. Large, challenging, and non-standard field requirements are a specialty.
- Services extend to placing and mounting a wide range of other items, such as upholstered walls, headboards, valances/cornices, and more.
- Our trained teams ensure items we install look good and work reliably. Installation is available in most areas nationwide.

## Service

- When draperies, window coverings, or other items require adjustment or repair, we respond immediately. We can repair on-location or at our factory.
- In addition, we offer reupholstery and other refurbishing as needed, helping our clients maximize and extend the lifespan of draperies and furnishings.

# Commitment to Sustainability

---

From products, to processes, to philanthropy, environmental responsibility is a core Hunter Douglas value. We are the worldwide leader in creating innovative, energy-efficient window fashions. Our commitment to minimizing our own impact on the environment includes aggressive plans to reduce energy consumption by 15%, water usage by 40%, and overall carbon emissions by 20% over a three-year period.



## Benefits of Window Coverings

---

### Energy Savings

In hospitality and commercial settings, a building consumes a significant amount of energy for electrical lighting and HVAC. Window coverings can play important roles in making buildings more efficient in these areas.

### Reduce Cooling and Heating Loads

By helping manage the heat energy of sunlight coming through windows, window coverings can reduce air conditioning and heating requirements from HVAC.

### Provide Daylighting and Glare Control

In addition to providing views, the light that comes through windows can be used to reduce dependence on artificial lighting. By managing glare from sunlight, window coverings enable use of daylighting while ensuring visual comfort.

### Air Quality

To reduce the presence of air contaminants, off-gassing and odors, window coverings should be composed of low-emitting materials, employing textiles and other materials free of PVC and halogen, for example. Many of our products are GREENGUARD Indoor Air Quality Certified®.

# Projects

---

## Westin Moana Surfrider, Waikiki Beach, HI, FR Shutters

Supplied and installed custom-fitted replacement shutters for original shutters that were damaged by sun and weather

## MGM Mirage Hotel & Casino, Las Vegas, NV, Custom Draperies

Fabricated banded blackout draperies in deluxe hotel rooms throughout iconic property on the Strip

## Doubletree Metropolitan Hotel, New York, NY, Vignette® Window Shadings

Renovation of this historic hotel in Midtown included sleek Vignette shades in guest rooms

## Grand Millennium Hotel, Beijing, China, Motorized Roller Shades

Shades installed in ceiling pockets block glare and heat in public areas while preserving city views



Westin Moana Surfrider, Waikiki Beach, HI



MGM Mirage Hotel & Casino, Las Vegas, NV

## Learn More

---

Hunter Douglas Hospitality provides the elements you need to create the effects you want, from window coverings and draperies, to fabricated upholstery, bedding, and more, to printed, woven, and custom fabrics. You dream. We deliver.

Visit us at [www.hunterdoughospitality.com](http://www.hunterdoughospitality.com) or call at 800.229.5300

# HunterDouglasHospitality



**YOUR COMPLETE  
ROOM SOURCE:**  
DRAPERIES &  
WINDOW COVERINGS  
BEDDING, FABRICS  
& UPHOLSTERY  
FABRICATION &  
INSTALLATION  
SERVICES

This brochure was printed using:



**Mixed Sources**  
Product group from well-managed  
forests, controlled sources and  
recycled wood or fiber  
www.fsc.org Cert no. BV-COC-953357  
© 1996 Forest Stewardship Council

By using post consumer recycled fiber in lieu of virgin fiber paper stock:

16 trees were preserved for the future.  
47 lbs. of water-borne waste were not created.  
6,905 gallons of waste water flow were saved.  
764 lbs. of solid waste were not generated.  
1,504 lbs. of net greenhouse gases were prevented.  
11,513,250 BTUs of energy were not consumed.

Hunter Douglas Hospitality  
Las Vegas • Chicago  
800.229.5300  
www.hunterdoughospitality.com

© 2009 Hunter Douglas Inc.® is a trademark of Hunter Douglas Inc.

